



## JOB DESCRIPTION

**JOB TITLE:** Warden (Summer)

**DEPARTMENT:** Royal Collection Trust

**SECTION/BRANCH:** Visitor Services

**LOCATION:** Buckingham Palace

**REPORTING TO:** Visitor Services Team Leader/ Assistant Visitor Services Manager

### Job Context

Royal Collection Trust is charged with the care and preservation of the Royal Collection and its presentation to the public. The Royal Collection is one of the largest and most important art collections in the world. It comprises almost all aspects of the fine and decorative arts, runs to more than a million objects and is spread among 15 royal residences and former residences across the UK. At The Queen's Galleries in London and Edinburgh aspects of the Collection are displayed in a programme of temporary exhibitions. Many works from the Collection are on long-term loan to institutions throughout the UK, and short-term loans are regularly made to exhibitions around the world as part of a commitment to broaden public access and to show parts of the Collection in new contexts. The works of art in the Royal Collection are held by The King in trust for his successors and the nation.

Royal Collection Trust is responsible for the management and financial administration of the public opening of Buckingham Palace (including The Queen's Gallery and the Royal Mews), Windsor Castle and the Palace of Holyroodhouse (including The Queen's Gallery). The monies generated from admissions, and from associated commercial activities are invested in the care and conservation of the Royal Collection and the promotion of access and enjoyment through exhibitions, publications, loans and educational activities.

The Visitor Office at Buckingham Palace is responsible for managing public access to the annual Summer Opening of the State Rooms, The Queen's Gallery, the Royal Mews and the garden at Buckingham Palace.



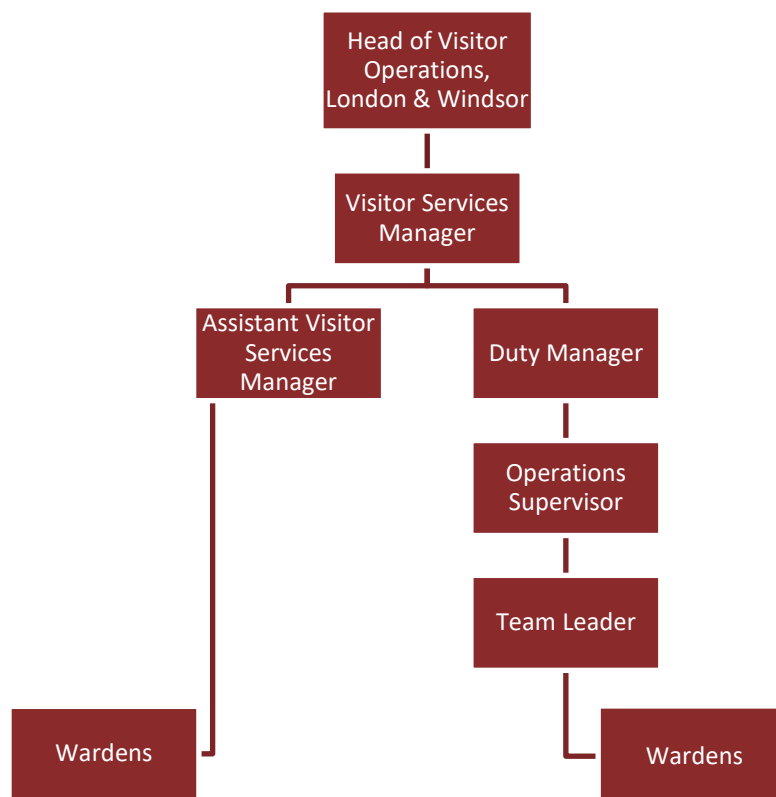
Royal Collection Trust, York House, St James's Palace, London SW1A 1BQ  
T. +44 (0)20 7839 1377, F. +44 (0)20 7839 8168, [www.rct.uk](http://www.rct.uk)

Royal Collection Enterprises Ltd is a company registered in England and Wales (2778486). Registered office: York House, St James's Palace, London SW1A 1BQ

This document is not contractual and may be subject to change following consultation with the post-holder



## Organisational Chart



## Job Purpose

To ensure that visitors to Buckingham Palace, The Queen's Gallery and Royal Mews receive the highest standard of visitor care and to ensure the safety and security of the building, exhibits and visitors.

## Principal Accountabilities

To maintain a high standard of visitor care and security and to greet all visitors in a friendly and polite manner.

To have a broad knowledge of the Visitor Route including the State Rooms, The Queen's Gallery and Royal Mews and their contents and of other information that visitors may require.

To deal with visitors' queries/problems efficiently.

To ensure that all areas which are open to visitors are clean and tidy on opening, and to maintain high standards of presentation throughout the day.

To assist in the preparation of the relevant visitor route before opening.

To attend training sessions prior to the Summer Opening.

This document is not contractual and may be subject to change following consultation with the post-holder.



To monitor the Visitor Route to ensure the safety of the building, exhibits and visitors.

To be aware of emergency and evacuation procedures and to act accordingly if an emergency should occur.

To ensure that visitors comply with all safety and security procedures.

To ensure that any accidents/incidents to visitors are reported to the Supervisor in line with accident reporting procedures.

To undertake any other tasks delegated, as and when required by the management team.

### Job Dimensions

The post-holder does not have any budgetary or supervisory accountabilities.

Internally, the post-holder has contact with most levels of Royal Household staff. Externally, the post-holder has contact with the external organisations and members of the public.

### Decision Making Responsibilities

The post-holder is expected to make routine decisions during the course of duty but will refer any queries or problems to the Team Leader or Duty Manager where necessary.

### Practical Requirements

The post-holder will typically be rostered to work 5 days per week, Thursday through to Monday, with rest days usually being Tuesdays and Wednesdays. Owing to the nature of the job additional hours may be required.

The post-holder will be required to stand-up for long periods and walk from site to site. The job is therefore physically demanding, however, consideration will be given to the requirements of the role and whether adjustments could be made to accommodate any disability.

### Person Specification

Have a genuine desire and ability to work with the public in a front line, customer focused environment.

Have a friendly manner and be able to communicate confidently with a broad range of people including colleagues, other members of the Royal Household and members of the public.

Have a proven ability, or be able to demonstrate the ability, to work effectively as part of a team and to establish good professional relationships with colleagues.

Be flexible, willing and co-operative; and understand that you will be required to work weekends and occasional evenings.

Be committed to working to high standards and providing the highest level of visitor care.



## The Royal Household

Thrive in a very busy environment and maintain patience and empathy even when working under pressure.

Ability to speak a second language would be advantageous.