



JOB DESCRIPTION

JOB TITLE: Paintings Conservator (Structural)

DEPARTMENT: Fine Art and Library

SECTION/BRANCH: Paintings Conservation

LOCATION: Conservation Studio, Windsor Home Park

REPORTING TO: Head of Paintings Conservation

Job Context

Royal Collection Trust is a department of the Royal Household and the only one that undertakes its activities without recourse to public funds. It incorporates a charity regulated by the Charity Commission and the Office of the Scottish Charity Regulator, Royal Collection Trust, and its subsidiary trading company, Royal Collection Enterprises Limited.

Royal Collection Trust is charged with the care and preservation of the Royal Collection and its presentation to the public. The Royal Collection is one of the largest and most important art collections in the world. It comprises almost all aspects of the fine and decorative arts, runs to more than a million objects and is spread among some thirteen royal residences and former residences across the UK. At The Queen's Galleries in London and Edinburgh and in the Drawings Gallery at Windsor Castle aspects of the Collection are displayed in a programme of temporary exhibitions. Many works from the Collection are on long-term loan to institutions throughout the UK, and short-term loans are regularly made to exhibitions around the world as part of a commitment to broaden public access and to show parts of the Collection in new contexts. The works of art in the Royal Collection are held by The Queen in trust for her successors and the nation.

Royal Collection Trust is responsible for the management and financial administration of the public opening of Buckingham Palace (including The Queen's Gallery, the Royal Mews and Clarence House), Windsor Castle (including Frogmore House) and the Palace of Holyroodhouse (including The Queen's Gallery). The monies generated from admissions, and from associated commercial activities are invested in the care and conservation of the Royal Collection and the



Royal Collection Trust, York House, St James's Palace, London SW1A 1BQ
T. +44 (0)20 7839 1377, F. +44 (0)20 7839 8168, www.royalcollection.org.uk

The Royal Collection Trust is a company limited by guarantee registered in England and Wales (2713536) and a charity registered in England and Wales (1016972) and in Scotland (SC039772). Registered office: York House, St James's Palace, London SW1A 1BQ.

This document is not contractual and may be subject to change following consultation with the post-holder



The Royal Household

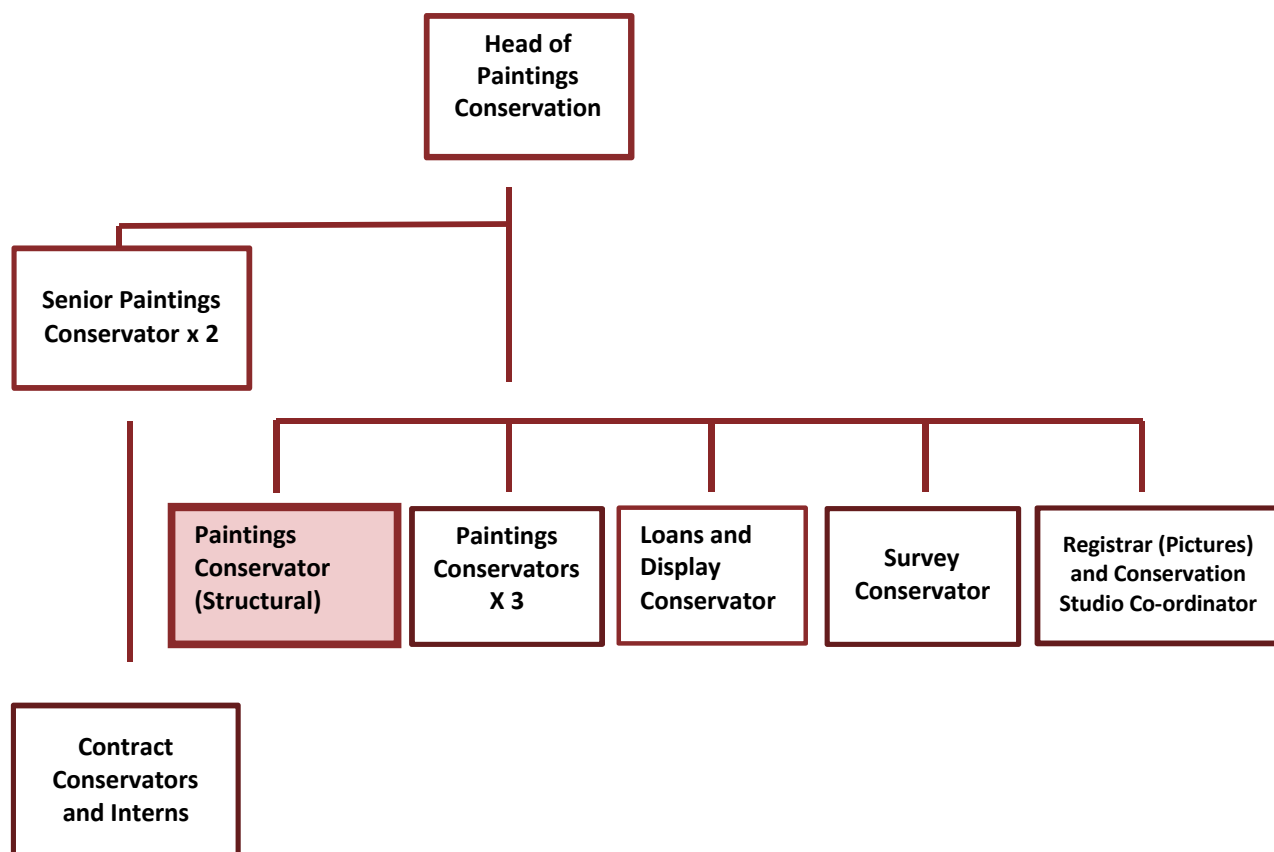
promotion of access and enjoyment through exhibitions, publications, loans and educational activities.

The Picture Conservation section is responsible for the restoration, conservation and presentation of all Paintings at Windsor, Buckingham Palace, Sandringham, Holyrood, Hampton Court, St. James's Palace and Osborne House. There are over 7,000 paintings in the Collection.

The postholder will be a participant in the *Getty Conserving Canvas Initiative* which aims to provide support for structural conservators through conservation treatment residencies that focus on knowledge and skill dissemination.

Part of the postholder's professional development will therefore include work placements at partner institutions, including the National Gallery London.

Organisational Chart





Job Purpose

To have responsibility for all structural aspects of conservation treatments of paintings in the Royal Collection and to conserve and maintain the paintings collections

Principal Accountabilities

To undertake full structural treatment and repair of paintings ensuring that the collections are conserved to the highest standards, ensuring the most appropriate methods and materials are employed at all times

Writing full reports on the condition and treatment of paintings, assembling comprehensive photographic records, compiling and maintaining updated condition reports on all paintings in the Collection, to help monitor possible deterioration.

Ensuring records are updated regularly and accessible to conservation and curatorial colleagues on the CMS database.

To guide, advise and collaborate on structural aspects of conservation treatments being undertaken by colleagues, and to establish and develop shared expertise in this area.

To carry out structural treatment and, when required, treatment of the painted surface both in the studio and in situ, to ensure that a painting or groups of paintings are structurally sound and of satisfactory appearance.

To attend work placements at partner institutions, including the National Gallery London, as part of the postholder's professional development.

To deliver public lectures and prepare scholarly articles relevant to the Royal Collection's conservation activities, aims and objectives.

To actively promote the role of Conservation within and beyond Royal Collection Trust

Job Dimensions

The post-holder shares responsibility for the paintings collections, displayed in state, public and private apartments of the occupied Royal Palaces, for those on display at Historic Royal Palaces and those on long-term loan



Decision Making Responsibilities

Working unsupervised, the post holder is expected to resolve most of the day to day problems that arise in the course of duty but to refer strategic or policy matters to the Head of Paintings Conservation

Practical Requirements

Owing to the nature of the post a flexible approach to work is required. Although the post-holder's primary workplace is Windsor, regular travelling to other Residences is required and short periods of time will be spent at Getty partner institutions both in the UK and abroad.

Due to the location of the Conservation studios, a full driving licence is essential and possession of own transport would be beneficial.

Person Specification

- A degree or equivalent in Art History/Science/Fine Art and a post-graduate qualification in Paintings Conservation
- Significant practical experience in the structural conservation of paintings and some experience in all aspects of paintings conservation
- Experience and skill in the use of hand tools and purpose-built equipment, woodworking machinery and its maintenance
- Proven ability to manage and plan treatment programmes and meet deadlines while ensuring standards are maintained
- A thorough understanding of environmental control systems and the mechanical behaviour of paint films and supports
- Excellent communication skills
- The ability to work both independently and as part of a team
- A high level of problem-solving abilities and an attention to fine detail
- High level of computer literacy